



## HIGH COURT APPROVAL FOR NEW TWICKENHAM STATION

**A High Court judge has given the green light to Richmond Council's planning committee decision to redevelop Twickenham Station.**

In December 2011, the council granted planning permission for a development by Solum (a partnership of station owners Network Rail and Kier Group plc) which had been scaled down from a previous proposal.

The development includes key improvements to the station, a new modern entrance and ticket hall, lifts to all platforms, new toilets, improved public transport interchange facilities, a café, a riverside walkway, a new public plaza with retail units and a development of flats above the scheme.

After consideration of the decision and other representations, the Greater London Authority and Secretary of State for Communities and Local Government announced that they had no objections.

A local campaign group, the Twickenham Residents Action Group (TRAG), opposed the Solum scheme since it was first put to local people for consultation almost three years

ago. Although the scheme received considerable support from local people, TRAG represented people opposed to it.

TRAG were disappointed when planning permission was granted and sought to challenge the decision accusing the Council of acting unlawfully. They were granted permission for a Judicial Review of the Council's decision and the parties presented their cases at court.

**Solum plan to create a new improved station, new homes and an attractive, safe and welcoming gateway to Twickenham, which local people will be proud of.**

At the High Court in December, the judge reviewed all the evidence and agreed with Richmond Council that the process followed was correct and the decision was lawful. TRAG's claims were dismissed, but it has resulted in the scheme being delayed.

The Rugby Football Union after consulting with all interested parties, including TRAG, supported the Solum scheme and the Council's decision to grant planning permission.

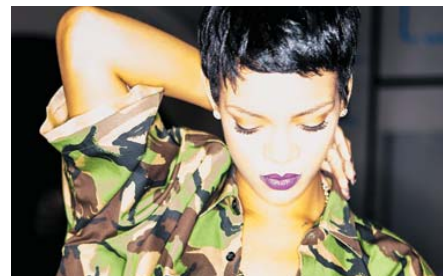
Despite the delay, working with Solum, the Council, transport authorities and local people, we are hopeful that most of the station improvements will be in place for the hundreds of thousands of visitors to our town for Rugby World Cup 2015.

Richmond Council will work with Solum to mitigate the impact of the building work on station neighbours and the travelling public.



The old Twickenham Station soon to be redeveloped after a lengthy delay

## IN THIS ISSUE



**RIHANNA IN CONCERT AT TWICKENHAM STADIUM**



**£5,500 FROM CHRISTMAS TREE SALES TO LOCAL CAUSES**



**TWICKENHAM STADIUM UPGRADE UNDERWAY**



**SUPPORTING FESTIVE FUN IN OUR LOCAL COMMUNITIES**



**RICHMOND BUSINESS EXPO AT TWICKENHAM STADIUM**

**RESIDENTS' BALLOT FOR DISCOUNTED TICKETS TO RIHANNA CONCERTS PAGE 3**

## SUPPORTING OUR COMMUNITY

### Annual sponsorship and financial commitments

- Richmond upon Thames Council Match Day Street Cleaning
- Richmond upon Thames Council Match Day Traffic Management and Twickenham Event Zone
- Free Event Day Shuttle Buses
- 18 Local Schools in Twickenham, Whitton, Isleworth and Hounslow
- Richmond upon Thames Primary Schools' Sports Day
- Strawberry Hill Music & Fun Day
- Twickenham Town Business Assoc
- Twickenham Town Co-ordinator
- Richmond AID - Advice and Information on Disability
- Richmond Borough in Bloom flower baskets in Twickenham
- St Margarets Fair
- Crown Road Summer Fair
- St Margarets Christmas Fair
- Whitton Business Association
- Whitton Christmas Fun Day
- Whitton St George's Day
- Homelink Day Respite Care Centre Whitton
- Richmond Shakespeare Society
- Richmond Concert Society
- Twickenham Riverside Trust
- Twickenham Alive
- Twickenham Gardening Association
- Twickenham Operatic Society
- Ivybridge Estate Summer Fun Day
- Ivybridge Residents Christmas Party
- Whitton Senior Citizen's Restroom
- Isleworth Public Hall

### Recent Community Support

- Artsrichmond Swan Awards
- All Hallows Church Twickenham
- East Twickenham Traders Assoc
- The Heathland School, Hounslow
- Shooting Star Children's Hospice
- Kew Community Trust
- Richmond Bridge Club
- Integrated Neurological Services
- The Jubilant Trust
- Mayor of Richmonds' Charities
- Stepping On Out
- SPEAR Richmond

### RFU Community Relations

If you would like information on RFU Community Relations, event days or Rugby Post contact Fraser Cullen, RFU Community Relations Manager, [frascullen@rfu.com](mailto:frascullen@rfu.com) or 020 8831 6533

Latest info: [rfu.com/TwickenhamStadium](http://rfu.com/TwickenhamStadium)

Photos: [www.leothephotographer.co.uk](http://www.leothephotographer.co.uk)  
Fraser Cullen, Getty Images.

## THE RFU & TWICKENHAM TOWN BUSINESS ASSOCIATION WORKING FOR TWICKENHAM



Riverside music at Twickenham Festival 2012



Opening of the Diamond Jubilee Gardens



Twickenham Alive Riverside Jubilee Festival



Christmas in Twickenham's Church Street

It's been a busy time for the Twickenham Town Business Association (TTBA) over the past six months, with the Twickenham Riverside Jubilee Festival, the Olympic cycling road races and time trials finishing off with a number of well attended and fun Christmas events.

During last autumn's rugby internationals extra efforts were made to welcome supporters by putting up flags of competing teams throughout the town. The TTBA created a great atmosphere for supporters who spend time and money in our town to benefit many local businesses.

A number of new businesses have set up in the town including, Rubens Bakehouse a fantastic new bakery on Heath Road, LuLu'z a lovely café on London Road, Ales & Tails a restaurant and bar on York Street and Cook the great frozen food store. If you have not already visited them please pop in and show your support.

As well as support from local businesses, key sponsors are the RFU and Richmond Council, supported by St James, Nat West, Tesco, Burger King, South West Trains, Churchill Homes, Arthur's and the Barmy Arms. A special thanks to Twickenham Alive and the Twickenham Riverside Trust.

The TTBA website for Twickenham town is [www.twickenhamthetown.org.uk](http://www.twickenhamthetown.org.uk) You can keep up to date on what's happening in the town and Con O'Brien and Bruce Lyons would love to hear from you with any ideas you have to improve the town centre. The TTBA look forward to working for you in 2013.

## RUGBY POST AVAILABLE FROM THE RUGBY STORE AND AT WWW.RFU.COM

The RFU's community magazine Rugby Post is distributed to over 30,000 homes and businesses local to Twickenham Stadium.

The magazine is published three or four times a year and contains information on RFU community relations, stadium events, event day information and the local residents' ticket ballots. If you do not receive it regularly, copies are available from Rugby House, the RFU Rugby Stores and Twickenham and Whitton libraries. Online at [www.rfu.com/rugbypost](http://www.rfu.com/rugbypost)



# DISCOUNTED TICKETS FOR RIHANNA CONCERTS

## RIHANNA DIAMONDS WORLD TOUR WITH SPECIAL GUEST DAVID GUETTA

**Twickenham Stadium  
Saturday 15th & Sunday 16th June**

Worldwide superstar Rihanna is bringing her Diamonds World Tour to Twickenham.

The recipient of six Grammy Awards® and seven Billboard Music Awards, Rihanna has sold over 37 million albums and 146 million digital tracks worldwide, and currently holds the record as the top-selling digital artist of all time.

## DISCOUNTED TICKETS FOR LOCAL RESIDENTS

The 18 concerts hosted at Twickenham Stadium since 2003 have seen 19,400 discounted tickets allocated to local residents.

Concerts are often sold out. However, the RFU retains 1,100 discounted tickets for every concert for local residents available by ballot in Rugby Post prior to any concert.

**Concert ballots are available at [rfu.com/rugbypost](http://rfu.com/rugbypost)**

## RFU CONCERT LINE Operational on concert days only

If residents local to the stadium do have any concerns or issues about concerts or require information, please call the RFU concert line on 07764 569402. The helpline will operate from 1pm to 11.30pm on concert days only.



Previous concerts have included The Rolling Stones, U2, Eagles, Bon Jovi, Rod Stewart, The Police, REM, Genesis, Iron Maiden, Help for Heroes featuring Robbie Williams with Gary Barlow and Lady Gaga.

## RIHANNA LOCAL RESIDENTS' TICKET BALLOT 2,200 DISCOUNTED TICKETS FOR SAT 15th & SUN 16th JUNE

The RFU has reserved 2,200 tickets available for purchase by local residents at a 15% discount.

If you live in postcodes TW1, TW2, TW3 2 and TW7 7, you are eligible to enter the ballot to buy two tickets.

**Successful applicants can buy a pair of tickets.**

The first 550 drawn will be able to purchase a pair of discounted tickets for Saturday 15th June.

The second 550 drawn will be able to purchase a pair of discounted tickets for Sunday 16th June.

**Closing date is Monday 4th February 2013.**

To enter, please fill out **ALL** the details requested and send the application form to:

Fraser Cullen, RFU Concerts Ballot, Rugby House,  
200 Whitton Road, Twickenham TW2 7BA.

**Only successful applicants will be notified by Monday 11th February.**

**Note for successful applicants:** For callers to the RFU Ticket Office, paying by cash, there is a £3 transaction fee. If you choose to pay for your two tickets by card a total transaction fee of £9.12 will apply. Details will be sent to successful applicants.

**If successful I would like to buy two discounted £45 upper tier seat tickets available at £38.25 each.  
PLEASE PRINT CLEARLY**

Name \_\_\_\_\_

Address \_\_\_\_\_

Postcode \_\_\_\_\_

Tel (Required) \_\_\_\_\_

Email (Optional) \_\_\_\_\_

# RFU DONATES £5,500 TO LOCAL CHARITIES AND ORGANISATIONS FROM CHRISTMAS TREE SALES



**Manor Christmas Trees returned for the annual Christmas tree sales from the RFU's car park on the A316.**

Last year the RFU donated £3,000 from the sales to the Richmond and Twickenham Times and Richmond Mayor's appeal for the restoration of the Radnor Gardens War Memorial.

This year the RFU will be donating £5,500 to support local charities and organisations including the Mayor of Richmond upon Thames Cllr Rita Palmer's charities. Others to benefit are:

## **HOMELINK**

Homelink is a nurse led day respite care centre in Whitton for adults staffed by qualified nurses and trained volunteers.

## **STEPPING ON OUT**

'Stepping on Out' is a small local charity which produces hand made greetings cards by adults with learning disabilities.

## **TWICKENHAM ALIVE**

A social enterprise working primarily in Twickenham creating and organising community, entertainment and sporting events.

## **THE JUBILANT TRUST**

Initiated by the Thames Traditional Rowing Association (TTRA). TTRA was formed in 1995 to promote traditional fixed seat rowing. It also aims to encourage use of the river Thames for sport and recreation.



## **MAYOR OF RICHMOND UPON THAMES CHARITIES**

### **The Horse Rangers Association**

A young people's charity, including those with special needs, supporting personal development by teaching the management and riding of horses.

### **The Poppy Factory**

Richmond charity makes poppies, crosses and wreaths for the Royal British Legion's annual Remembrance Day appeal. Also places wounded, injured or sick ex-military personnel of all ages into jobs beyond the Factory and all around the UK.

### **WHITTON BUISNESS ASSOCIATION**

Supporting the Whitton community and local businesses.

# SUPPORTING LOCAL PEOPLE WITH LEARNING DISABILITIES



**'Stepping on Out' is a small local charity which produces hand made greetings cards by adults with learning disabilities.**

It's a not for profit organisation with the aim of enabling people with disabilities to gain independence away from a college or day care environment.

They all work very hard to make their little business a success and eventually hope to employ other people with disabilities to help with production and administration.

They make and sell greetings cards, bookmarks and other goods to raise funds for their small business in the community.

They are all really charming hand made designs. The size of cards are C6 114 x 162 mm and come complete with envelope, insert and in clear plastic bags. All cards are blank inside and cost around £1 each. The cards can have preferred wording of your choice added to the front.

## **Our Vision**

**“For a world where adults with a learning disability have personal control and fulfillment in their own lives, enjoying equal participation with the general community.”**

Please support them by ordering from those illustrated on their web site at [www.SteppingonOut.org.uk](http://www.SteppingonOut.org.uk) Also available from local stockists including Café Sunshine, Twickenham Riverside, the foyer of RichmondAid, 4 Waldegrave Road, Teddington or their new shop Stepping on Out, 7 The Causeway, Teddington, open Monday, Wednesday and Friday from 10am to 4.30pm, 0208 977 8042.



**MP Vince Cable on a visit to Stepping on Out, where he spent time helping and talking to the group about their work and business.**

# THE YARDBIRDS 50TH ANNIVERSARY CONCERT

St George's Suite, Twickenham Stadium, Friday 15th March  
Supported by the Jay Tamkin Band



**The Yardbirds will celebrate their 50th anniversary when the band return to their Twickenham roots for a special one-off concert which will include guest spots with former Yardbirds members.**

Pioneers of the British rhythm and blues and famous for launching the careers of 3 rock superstars, Eric Clapton, Jimmy Page and Jeff Beck. The band boasts two of its original members Jim McCarty and Chris Dreja, although Chris has been unwell lately and may

not be able to appear with the band but hopefully will make a guest appearance.

They are joined by guitarist Ben King (who critics have compared to Jeff Beck), Andy Mitchell, a powerful singer, formidable acoustic guitar and harmonica player and David Smale, a brilliant young bass player.

The concert is mainly standing, with some unreserved seating. This event will be a sell-out so early booking is advised.

Doors open 7pm. Supporting act Jay Tamkin Band 8pm. Yardbirds 9pm.

Part of proceeds towards The Twickenham Festival 2013.

[www.eelpieclub.com](http://www.eelpieclub.com)

**Tickets now on sale  
£25 (£23 Members)**

Buy Now

[www.ticketweb.co.uk](http://www.ticketweb.co.uk)  
or phone 08444 771000.

*All tickets will be £29  
on the night (if still available).*



The Yardbirds Live Room Twickenham 2011

## TWICKENHAM OPERATIC SOCIETY PRESENTS TOPS WINTER WARMER

St George's Suite, Twickenham Stadium Jan 24, 25 & 26 at 8pm

**It's time to banish the Winter Blues and come and have a jolly evening out in the warm and welcoming atmosphere of the St George's Suite at Twickenham Stadium.**

RFU sponsored TOPS will be singing favorite songs, performing excerpts from hit musicals and celebrating their recent "Best Musical of the Year" award. Bar opens 7.00pm.

**The great night out - excerpts include...**

- Jesus Christ Superstar • Grease • The Rat Pack
- Billy Elliot • A Rodgers and Hammerstein selection and
- TOPS Celebrates the 50th anniversary of James Bond

Tickets only £10 call 07989 565411  
[www.twickenhamoperatics.com/tickets](http://www.twickenhamoperatics.com/tickets) (bkg fee applies)  
[tickets@twickenhamoperatics.com](mailto:tickets@twickenhamoperatics.com)

**TOPS'**  
**Winter**  
**Warmer**  
**a new year hangover cure!**

St George's Suite - Twickenham Stadium

January 24th 25th 26th  
Time: 8pm All tickets: £10



Previous TOPS shows, Twickenham Stadium

# SUPPORTING OUR LOCAL COMMUNITY



## TWICKENHAM, WHITTON, ST MARGARETS, ISLEWORTH AND EAST TWICKENHAM

As part of our good neighbour policy the RFU sponsors numerous events in our local community over the festive season.

Working with the Twickenham Town Business Association, the RFU helped with Christmas trees throughout the town.

The first Diamond Jubilee Gardens Christmas Evening on Twickenham Riverside was a real success owing to the organisation by Twickenham Alive and Richmond Council.

Recent support also went to the Whitton Christmas Fun Day in the High Street and the St Margarets Christmas Fair in Crown Road. Other events included the All Hallows Church Christmas fundraising dinner and East Twickenham Traders Association Christmas activities and Ivybridge senior citizens.



Festive fun at the Diamond Jubilee Gardens on Twickenham Riverside. After 30 years of neglect, the site was renovated last year. Credit to Lord True, Richmond Council and the local people who have battled for years to have this area brought back into public use.



Photos: www.leohephotographer.co.uk, Jim Templeton-Cross, Twickenham Alive

# ACTIVITIES OVER THE FESTIVE SEASON



# ENGLAND MATCH TICKETS FOR RESIDENTS

## Tickets for Major England Matches

The Rugby Football Union (RFU) is a membership organisation and gives priority to purchase tickets for major England matches to its member clubs, schools and constituent bodies. However, an allocation is available by ballot for local residents.

### RFU Local Residents' Ballot to buy tickets for England matches

**The ballot covers major England matches only.** Those successful in the ballot can purchase a pair of tickets not normally available for public sale. There are 200 pairs of tickets to purchase for each major England match and open to residents living in TW1, TW2, TW3 2 and TW7 7. The next application form will be in the September 2013 edition of the RFU's Rugby Post magazine delivered locally and at – [www.rfu.com/rugbypost](http://www.rfu.com/rugbypost) For most other matches tickets are available from the RFU Ticket Office at the stadium 0871 222 2017 or from Ticketmaster 0844 847 2492 or [www.ticketmaster.co.uk](http://www.ticketmaster.co.uk)

## TWICKENHAM STADIUM UPGRADE

To ensure that Twickenham Stadium is a truly world class venue heading towards 2015 and bring benefits for a further quarter of a century, a major upgrade is taking place.

Work began last summer with the main improvement being a state of the art new pitch installed over 14 weeks. The new pitch has excellent drainage to eliminate standing rainwater, under soil heating to keep frost out of the ground, a new irrigation system and desso fibres to provide additional stability.

In the past season the stadium was awarded five stars by Leonard Cheshire's Disability's Action for Access campaign and our national stadium continues to be at the forefront in catering for disabled visitors, spectators and guests of the RFU Injured Players Foundation.

The start of the complete mechanical and electrical upgrade has also begun as well as some 20 executive boxes being refurbished. Among other key improvements are: improved public catering facilities; upgraded wi-fi connectivity; new video screens at each end of the pitch; an IT backbone extension to cover the entire stadium; improved media areas; updated pitch floodlighting; centre tier LED signage to enable better fan engagement and information; replacement of areas of seating; turnstile and access control; facilities for people with disabilities; additional female toilets and safety and security upgrades. All works to be completed by summer 2015.

### RECYCLING AT TWICKENHAM STADIUM

We consistently achieve over 60% recycling figures for event day waste, with the remaining diverted from landfill to energy from waste initiatives, maintaining our 100% diversion from landfill commitment on event days. We have also recently begun to recycle plastic and cardboard on site.

## TWICKENHAM STADIUM WINS TOP HONOURS



RFU award winning ground staff Ian Ayling, Keith Kent and Andy Muir

Twickenham Stadium and Head Groundsman Keith Kent picked up a trio of awards from the Institute of Groundsmanship (IOG).

The awards received by the RFU were:

**The Groundsmen's Groundsman of the Year across all sports: Winner: Keith Kent**  
**IOG Professional Rugby Union Groundsman of the Year: Winner: Keith Kent**  
**IOG Governing Bodies Professional Spectator Sports Ground of the Year: Winner: Twickenham Stadium**

Now in their fourth year, the IOG Awards recognise leadership, innovation and outstanding achievement across every aspect of grounds care – from grassroots pitches to professional stadia.

Stadium Director Richard Knight said: "In a year that has seen the Twickenham pitch transformed, it is fitting that Keith and his team have been recognised in this way and the awards are fully deserved. It really tops things off for our fabulous stadium to also be recognised in this way and is testament to the hard work and enthusiasm of everyone who works here."





# RFU STRAWBERRY HILL MUSIC & FUN DAY



On Sunday 7th July the Rugby Football Union presents the annual RFU Strawberry Hill Music & Family Fun Day in the grounds of the gothic house on Waldegrave Road in Twickenham. Around 8,000 people attended last year.

As well as providing the community with a fun day out, the aim of the event is to raise funds for restoration and improvements to Horace Walpole's little gothic castle Strawberry Hill House.

Last year's event contributed around £11,000 towards the restoration of the house. Once again there will be the popular live music stage for a feast of musical excellence, the usual array of



charity and craft stalls, children's entertainment, fairground rides, beer and Pimms tents, hot and cold food and refreshments. Bring a picnic and enjoy the day from 12noon until 7.30 pm.

For information or booking stalls at this popular local community event:  
[www.twickenhamalive.com](http://www.twickenhamalive.com)  
 also see [www.strawberryhillhouse.org.uk](http://www.strawberryhillhouse.org.uk)

## TWICKENHAM FESTIVAL 6-30 JUNE 2013



The new Twickenham Festival will be sponsored by the Rugby Football Union, organised by Twickenham Alive and supported by the Twickenham Town Business Association, Richmond Council and the Twickenham Riverside Trust.

From 6th to 30th June 2013 – Locations include Twickenham Riverside, Church Street, the Diamond Jubilee Gardens, Radnor Gardens, Orleans House and others to be announced.

**Provisional festival events include:**

**6 June** D-Day Dance Twickenham Rowing Club; **7 June** Church Street Market and Tug of War; **8 June** Twickenham Alive Blue Mile Riverside, Church Street Market, St Mary's Church Fair, **12 June** Jazz Cruise; **15 June** Jubilee Gardens 80s Music Day; **16 June** Twickenham Carnival, Riverside Market; **22 June** Twickenham Alive Dragon Boats; **23 June** Radnor Gardens Family Fun Day; Wine Tasting Cruise; **29/30 June** Riverside music at the Diamond Jubilee Gardens.

[www.twickenhamalive.com](http://www.twickenhamalive.com)

## RFU EDUCATION PARTNERSHIP

The aim of the RFU's Education Partnership is to provide real benefits for 18 local schools.

Each school receives an annual grant for sports and leisure and an invitation to The World Rugby Museum & Stadium Tour free of charge.

The RFU also sponsors Richmond upon Thames Primary Schools' Borough Sports Day.

### PARTNERSHIP SCHOOLS

TWICKENHAM  
 Archdeacon Cambridge's  
 CE School  
 Orleans Infant School

St James's RC Primary Sch  
 St Mary's CE School  
 St Stephen's CE Junior Sch  
 Trafalgar Infant School  
 Trafalgar Junior School  
 Orleans Park School  
 Waldegrave School for Girls  
 WHITTON  
 Bishop Perrin CE School  
 Chase Bridge School  
 Heathfield Junior School  
 Nelson School  
 St Edmunds RC School  
 Twickenham Academy  
 HOUNSLOW  
 The Heathland School  
 ISLEWORTH  
 Ivybridge Primary School  
 Worplesdon Primary School

## RFU STAFF DONATE £1000 TO INS & SPEAR

A total of £1000 was raised from RFU staff at the recent Rugby Store sale. The money was donated to two charities located in Twickenham and each will receive £500.

INS Integrated Neurological Services is a Twickenham based charity providing long-term support for people with neurological conditions and their carers. Supporting people who are living with the effects of long term neurological conditions such as head injuries, strokes, Parkinson's Disease and Multiple Sclerosis [www.ins.org.uk](http://www.ins.org.uk)

SPEAR is a Twickenham based charity doing excellent work across Richmond upon Thames helping homeless and other vulnerable people. SPEAR's outreach service helps to identify rough sleepers in the Borough and last year helped over 100 people who were homeless. Their helpline also received over 300 calls from people in need of housing support. [www.spearlondon.org](http://www.spearlondon.org)

# Richmond Business Expo

## Showcase Your Business

Over a 1,000 visitors will be at the Richmond Business Expo  
Twickenham Stadium, Friday 26th April 2013

If you are a local business owner, wanting to seriously raise your profile, then the Richmond Business Expo is where to be on 26th April 2013. Held at Twickenham Stadium and sponsored by the RFU, this is thebestofrichmond's flagship event. And it's no ordinary expo!

Row upon row of soulless stands are barred. Instead, you will find one incredibly vibrant and informative event that showcases some of the best businesses in the borough. With separate zones for Home & Property, Business Services and Leisure & Community there will be something for everyone.



'How I Made It' seminars will take place in the Live Room and a drinks party for the exhibitors' takes place at the end of the show. In an age where social networking can take over how we communicate, people need to meet face to face to make real things happen. And there's no other event locally that brings so many local businesses together in one day.

It also provides a massive opportunity for the local economy. Residents are encouraged to drop by and meet those that could



*Very organised event with a great atmosphere. With the amount of people we spoke to, time passed very quickly. We thoroughly enjoyed the experience*

Aliyah Zaidi, The Big Yellow Feet Production Company

*Thank you very much for all the hard work you put in to create a very exciting and vibrant show*

Lisa Brian (visitor)

Expo 2012 attracted 82 exhibitors and over 1,000 attendees. As event organisers, we give a huge amount of support to all exhibitors on how to showcase their business effectively to guarantee a return on investment.



provide services for leisure and home. For budding entrepreneurs, it's a once-a-year opportunity to meet all the unique suppliers that can help your business to grow.

If you've ever thought of exhibiting, this is a prime opportunity – give it a go.

**FREE registration**  
**Book your ticket at**  
**[www.richmondexpo.co.uk](http://www.richmondexpo.co.uk)**



**thebestofrichmond**

# EVENT DAY CONTROLLED PARKING ZONE



Signs around the stadium show details of when event day parking controls are next in operation

**The Event Day Controlled Parking Zone (Zone R) is operated by the London Boroughs of Richmond upon Thames and Hounslow.**

The aim of Zone R is to provide parking for local residents and their visitors and to deter stadium visitors from parking in local roads.

## How Zone R works

The date of each event and the hours of operation are displayed on signs at entry points to Zone R which includes the HM and C Zones.

Outside the hours of operation, there is no restriction on parking in marked bays or single yellow lines, unless indicated by time plates. This does not apply to the HM and C Zones where restrictions apply.

Residents within Zone R must display their Residents' Permits on event days. The permits are FREE and valid in any residents' bay within Zone R when operational on event days.

Permits are issued by post and application forms can be obtained by Richmond Borough residents from 08456 122 660 Mon-Fri 9am to 5pm or email [parkingpermits@richmond.gov.uk](mailto:parkingpermits@richmond.gov.uk)

Hounslow Borough residents can call 020 8583 6666 between 8.45am to 4.15pm Mon-Fri.

Visitors' permits are also available free of charge. For further information please call the telephone numbers listed above.

**Blue disabled badge holders can park free in residents' bays and for up to three hours on single yellow lines, providing there are no restrictions.**

**Event day parking information:**  
[www.richmond.gov.uk/parking](http://www.richmond.gov.uk/parking)

## PARKING ZONE SCHEDULE 2013

Hours of operation 10am- 6pm or as advised on Event Day signs in roads close to the stadium.

Saturday 2 February  
Saturday 23 February  
Sunday 10 March  
Saturday 27 April  
Saturday 11 May TBC  
Sunday 12 May TBC  
Saturday 25 May  
Sunday 26 May  
Saturday 15 June  
Saturday 16 June

**The Boroughs of Richmond upon Thames and Hounslow are responsible for the implementation and enforcement of the Event Day Controlled Parking Zone.**

**Event Day Parking Helplines**  
Richmond Council 020 8744 0462  
Hounslow Council 07852 310713  
[www.richmond.gov.uk/parking](http://www.richmond.gov.uk/parking)

# EVENT DAY TEMPORARY ROAD CLOSURES



**TEMPORARY ROAD CLOSURES LINE  
ON EVENT DAYS PHONE 020 8831 6604  
OR [www.twitter.com/lbrut](http://www.twitter.com/lbrut)**

**In the interests of public safety, the police can authorise road closures before and after events.**

The roads that can be affected are **Rugby Road, Whitton Road, London Road** and to support traffic dispersal after major events, access to the A316 from Hospital Bridge Road.

As a guide, road closures will be implemented for events attended by more than 25,000 or at the discretion of police should public safety become an issue. Normally the closures will be from half an hour, up to two hours for capacity events.

Twickenham Police have an event day information line on 020 8831 6604. This has a recorded message about road closures on the event day. At other times call 020 8247 7193. Information on the day also available at [www.twitter.com/lbrut](http://www.twitter.com/lbrut)

**Egerton Road barrier is open during road closures.**

# RFU EVENT DAY SHUTTLE BUS SERVICE

To encourage supporters to use public transport, the RFU provides up to 33 double deck buses running between the stadium and Richmond before and after matches and concerts.

The service operates from the A316 near Old Deer Car Park and close to Richmond Station for three hours prior to kick off. There is a charge of 50p.

For two hours after matches buses to Richmond/Hounslow East stations are free.



**London United Buses donated £2,144 to BBC Children in Need from fares collected on the England v Australia match day.**



**TWICKENHAM**  
STADIUM

## EVENTS TO NOVEMBER 2013

2013		Kick Off / Start Time	Est. Att.	Tickets
<b>FEBRUARY</b>				
Sat 2	<b>RBS 6 Nations</b> <b>ENGLAND v SCOTLAND</b>	4.00pm (finish 5.30pm)	82,000	Local residents' ballot Now Closed
Sat 23	<b>RBS 6 Nations</b> <b>ENGLAND v FRANCE</b> England Women v France Women	5.00pm (finish 6.30pm) 7.20pm (Free entry from 7.00pm)	82,000	Local residents' ballot Now Closed
<b>MARCH</b>				
Sun 10	<b>RBS 6 Nations</b> <b>ENGLAND v ITALY</b>	3.00pm (finish 4.30pm)	82,000	<b>BUY TICKETS</b>
Sat 23	Daily Mail RBS Schools' Day	from 11.00am	7,000	<b>BUY TICKETS</b>
Sun 24	British Universities' & College Finals	from 12.00 noon	3,000	<b>BUY TICKETS</b>
<b>APRIL</b>				
Sat 27	<b>Army v Navy for the Babcock Trophy</b> Combined Services U23 v Oxbridge U23	3.00pm (finish 4.30pm) 12.00noon	60,000	<b>BUY TICKETS</b>
<b>MAY</b>				
Sat 4	RFU Cup Finals & National U20 Final	from 11.00am	5,000	<b>BUY TICKETS</b>
Sat 11 & Sun 12	<b>Marriott London Sevens</b>	9.30am-6.15pm 9.00am-6.45pm	50,000 60,000	<b>BUY TICKETS</b> <b>BUY TICKETS</b>
Sat 25	<b>Aviva Premiership Rugby Final</b>	3.00pm (finish 4.30pm)	82,000	<b>BUY TICKETS</b>
Sun 26	<b>ENGLAND v BARBARIANS</b> Bill Beaumont Cup Final County Championship Shield Final	1.00pm (finish 2.30pm) 3.15pm 5.15pm	40,000	<b>BUY TICKETS</b>
<b>JUNE</b>				
Sat 1	<b>CONCERT TBC</b>	6.00pm-10.30pm	55,000	Details to be announced
Sat 15	<b>RIHANNA in CONCERT</b>	6.00pm-10.30pm	55,000	Local residents' ballot January Rugby Post
Sun 16	<b>RIHANNA in CONCERT</b>	6.00pm-10.30pm	55,000	Local residents' ballot January Rugby Post
<b>AUGUST</b>				
Fri 2-Sun 4	The Watchtower Convention	10.00am-5.30pm	Up to 20,000 each day	
<b>SEPTEMBER</b>				
Sat 7	<b>London Double Header</b>	TBC see <a href="http://rfu.com/TwickenhamStadium">rfu.com/TwickenhamStadium</a>	70,000	<b>BUY TICKETS</b>
<b>NOVEMBER</b>				
Sat 2	<b>QBE International</b> <b>ENGLAND v AUSTRALIA</b>	2.30pm (finish 4.00pm)	82,000	Local residents' ballot September Rugby Post
Sat 9	<b>QBE International</b> <b>ENGLAND v ARGENTINA</b>	2.30pm (finish 4.00pm)	82,000	Local residents' ballot September Rugby Post
Sat 16	<b>QBE International</b> <b>ENGLAND v NEW ZEALAND</b>	2.30pm (finish 4.00pm)	82,000	Local residents' ballot September Rugby Post
Sat 30	<b>Barbarians v Fiji TBC</b>	TBC	TBC	

NB. Events subject to change/others may be added. TBC: To Be Confirmed. Stadium gates open approximately 4 hours before KO. For latest information [www.rfu.com/TwickenhamStadium](http://www.rfu.com/TwickenhamStadium) RFU Ticket Office: 0871 222 2017 / [tickets@rfu.com](mailto:tickets@rfu.com) / [www.rfu.com](http://www.rfu.com)

**BUY TICKETS** Tickets when available: [www.rfu.com/tickets](http://www.rfu.com/tickets) and [www.ticketmaster.co.uk](http://www.ticketmaster.co.uk) or 0844 847 2492 England photo: GettyImages